

PORTSMOUTH



Ideally situated on England's south coast with excellent transport links by road, rail, ferry and air, and just 75 miles from London.

Places to visit

- Gunwharf Quays
- Portsmouth Historic Dockyard
(including HMS Victory, Mary Rose, HMS Warrior & National Museum of the Royal Navy)
- Spinnaker Tower
- The D-Day Story
- Aspex Gallery
- Blue Reef Aquarium
- Charles Dickens' Birthplace Museum
- Cumberland House
- Natural History Museum
- Eastney Engine Houses
- Hotwalls Studios
- Independent breweries
- Port Solent
- Portchester Castle
- Portsmouth Anglican Cathedral
- Portsmouth Museum and Art Gallery
- Portsmouth Pyramids
(including Exploria)
- Royal Armouries at Fort Nelson
- Royal Garrison Church
- St John's Roman Catholic Cathedral
- Southsea Castle



PORTSMOUTH MUSEUM & ART GALLERY



PORTCHESTER CASTLE



SPINNAKER TOWER



SOUTHSEA CASTLE



GUNWHARF QUAYS



HMS VICTORY



KINGS THEATRE



PORTSMOUTH GUILDHALL

Theatre and live entertainment

- Groundlings Theatre
- Kings Theatre
- New Theatre Royal
- Portsmouth Guildhall
- Wedgewood Rooms

Events

Portsmouth has a year-round calendar of events including Bookfest and Guildhall Games Fest in February, Comic Con in May, D-Day Commemorations, Armed Forces Day and Pride in June, International Kite Festival and Sail GP in July, The Ocean Race and Victorious Festival in August and the Great South Run in October. The year ends with a whole host of seasonal entertainment in November and December. For the most up to date information on all events go to visitportsmouth.co.uk



THE GREAT SOUTH RUN



INTERNATIONAL KITE FESTIVAL ©VERNON NASH



VICTORIOUS FESTIVAL ©STRONG ISLAND MEDIA



Group visits made easy!

The Visit Portsmouth Team are on hand to help with all aspects of your group visit.

Visitor Information is available both at the Visitor Info Point inside the Hard Interchange and at the reception areas for The D-Day Story and Portsmouth Museum and Art Gallery, offering a range of information including Mini Guides for your group (also available in Dutch, French, German and Spanish) if booked in advance.



Tourist guides

The team can arrange a local guide to provide walking or coach tours which can be made bespoke for your group.

A range of itineraries are also available on request including:

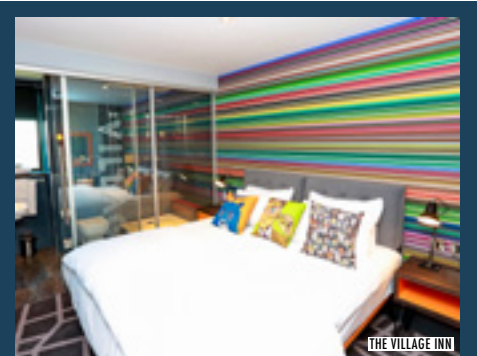
- Portsmouth Highlights
- Great Battles
- Stories of World War Two
- Fortifications of Portsmouth
- Best of British - food, shopping and culture
- Literary Greats
- Exhilarating Experiences



THE NELSON MEMORIAL

Familiarisation visits

The team are keen to help arrange familiarisation visits for group organisers to visit the city and help with planning for a future visit. Get in touch to find out more.



THE VILLAGE INN

Group accommodation

- Holiday Inn Portsmouth
- Holiday Inn Express, Gunwharf Quays
- Holiday Inn Express, Farlington
- Ibis, Portsmouth Centre
- Ibis, Budget
- Innlodge
- Keppels Head
- Portsmouth Marriott
- Premier Inn x 5
- Travelodge x 3
- Queens Hotel
- Rees Hall
- Royal Maritime Hotel
- Village Hotel

For details on these and more group accommodation offers go to visitportsmouth.co.uk/accommodation



HOLIDAY INN EXPRESS, GUNWHARF QUAYS



CHARLES DICKENS' BIRTHPLACE MUSEUM



LCT 7074, THE D-DAY STORY



HOTWALLS STUDIOS



ROYAL GARRISON CHURCH

Visitor Information:

✉ vis@portsmouthcc.gov.uk

☎ 02392 826722

🌐 visitportsmouth.co.uk

GETTING TO PORTSMOUTH

Please use the map and table below for information about Portsmouth's coach parking and drop-off locations.



Contact & booking

Contact the coach parking team in advance of your visit and take advantage of a range of special offers.

Email us at:
coaches@portsmouthcc.gov.uk
or call: **023 9268 8310**

Location	Toilets	Refreshments	Open	Spaces
1. Queen Street (coach drop off point only)	100m	100m	24 hours	n/a
2. St Georges Road (coach drop off point only)	200m	200m	24 hours	n/a
3. St Georges Road / Museum Road	200m	200m	24 hours	16
4. Seafront D-Day	Yes	50m	24 hours	16
5. Port Solent (free parking)	Yes	Yes	24 hours	8
6. Cascades Approach	Yes	Yes	24 hours	up to 5
7. Gunwharf Quays (drop off point only)	100m	100m	24 hours	n/a

Parking fees: £1 per hour up to 4 hours. Over 4 hours, £5 for all day.

15 minute drop off and pick up charges at Queen Street: £3.50 to drop off, £3.50 to pick up.

Portsmouth has a Clean Air Zone (CAZ) which means that some older coaches may be subject to a charge to enter the CAZ area. Find out more at: **www.cleanerairportsmouth.co.uk**

All details correct as of January 2025.