

Official Visitor Guide 2018

PORTSMOUTH



visitportsmouth.co.uk

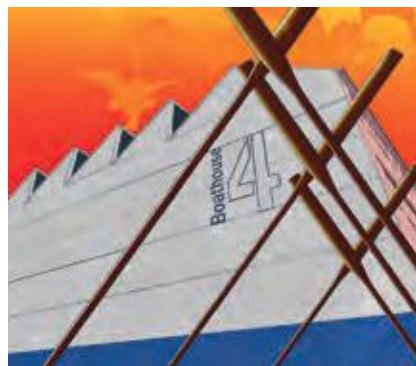


Portsmouth Historic Dockyard

WHERE ADVENTURES BEGIN
ICONIC SHIPS, BREATHTAKING MUSEUMS
HIGH-TECH THRILLS, HEROIC ENCOUNTERS
ONE AMAZING PLACE

HMS VICTORY • HMS WARRIOR 1860 • ACTION STATIONS • HMS M.33
BOATHOUSE 4 • EXPLOSION • ROYAL NAVY SUBMARINE MUSEUM
36 HOURS: JUTLAND • THE MARY ROSE
NATIONAL MUSEUM OF THE ROYAL NAVY • HARBOUR TOURS

THE
NATIONAL
MUSEUM



BOOK ONLINE AND SAVE
VISIT HISTORICDOCKYARD.CO.UK

WELCOME TO PORTSMOUTH

THE GREAT WATERFRONT CITY

A top destination on England's fabulous south coast, Portsmouth is home to spectacular events, world class attractions, a great cultural offer and fabulous places to stay, eat and shop! This guide will help you make the most of your time in the city and uncover the hidden gems that make Portsmouth unique.

While in the city, don't miss the breathtaking panoramic views of Portsmouth and beyond from the top of the iconic Emirates Spinnaker Tower. Visit Gunwharf Quays to shop at over 90 premium designer outlets and eat at one of 30 cosmopolitan bars and restaurants.

Explore Portsmouth Historic Dockyard, home to the finest maritime heritage in the world, including the historic ships HMS Victory, HMS Warrior 1860, Mary Rose and M.33, along with the National Museum of the Royal Navy.

Southsea has something for everyone, from unique independent shops, boutiques and restaurants, to wide open spaces, lush green parks, miles of beach and seafront attractions. Visit Henry VIII's castle and take in the views of the Solent from the castle ramparts.

Opening in spring 2018, the new D-Day Story museum is an essential part of any visit. Learn about this momentous



You could see your photographs of Portsmouth featured in our publications, publicity material or online channels. Just upload them to our Flickr group: [Views of Portsmouth: submitted pictures](#)

 *HMS Queen Elizabeth leaving Portsmouth Harbour*
Shaun Roster
www.shauroster.com

turning point in World War Two, told through authentic objects, interactive displays and the perspectives of those who were there.

Portsmouth has great literary connections. Discover more about the city's Sherlock Holmes connection with a new exhibition at Portsmouth Museum and visit the birthplace of the great author, Charles Dickens.

With its narrow cobbled streets, historic fortifications, new cultural quarter, bustling Camber Dock, traditional pubs, restaurants, and local fish market, Old Portsmouth is perfect for a stroll.

AN ISLAND CITY, IN LOVE WITH THE SEA

As the UK's only island city, home to great sailing, the Royal Navy and an unparalleled collection of maritime heritage, Portsmouth has always had a love affair with the sea.

In August 2017 HMS Queen Elizabeth, the first of two new class of aircraft carrier, arrived in Portsmouth. At 280m these are the biggest warships ever built for

the Royal Navy. The impressive carriers are longer than the Houses of Parliament (265m) and their length is greater than the height of the Emirates Spinnaker Tower (170m)! The second carrier, HMS Prince of Wales, will arrive in the city in 2019.

British America's Cup team Land Rover BAR have their UK team base in Portsmouth, where they are preparing a challenge for the 36th America's Cup in 2021.

At the heart of the team base is the Tech Deck and Education Centre showcasing the sport, innovation, technology and sustainability. Visits can be arranged for schools and community groups. Find out more at www.landroverbar.com

Portsmouth is the perfect place to try your hand at sailing. The Andrew Simpson Watersports Centre offers a great range of sailing experiences for all abilities. If you are already an accomplished sailor, or just like checking out the visiting yachts and boats, make sure you visit our three marinas at Gunwharf Quays, Port Solent and Southsea.



Portsmouth
the **great** waterfront city



Onboard rib ride
Onboard Charters
www.onboardcharters.com

Live music
Vernon Nash
www.vernonnash.com

Madness, Victorious Festival 2017
Tom Langford
www.tomlangfordphoto.co.uk

SPRING IN YOUR STEP



Longer evenings, warmer weather and a glut of bank holiday weekends make spring an ideal time to take a seaside break. There's nothing better than fresh sea air and coastal walks to really blow away the winter cobwebs.

Why not start your springtime visit with a wander around Southsea? This cultural, quirky side of Portsmouth is home to many independent shops, coffee houses, bars and restaurants. There's also plenty of culture to be found in Southsea; it was once the home of Sherlock Holmes author, Sir Arthur Conan Doyle, who called it "a glorious place".

After taking in some of Southsea's many shops (be it independent boutiques

on Albert Road, or more familiar high street names along Palmerston Road), rest up with a quality coffee and light bite from one of the many coffee houses. You should then be nicely set up for an afternoon wandering along the seafront or Southsea Common, enjoying the bracing sea air.

After dusk falls you should immerse yourself into the city nightlife. Many pubs offer live music – especially on weekends – or there are designated venues such as Portsmouth Guildhall, Pyramids Centre and Wedgewood Rooms that welcome touring bands, artists and comedians. Alternately we have two wonderful theatres designed by eminent architect Frank Matcham (the Kings Theatre in Southsea and New Theatre Royal in the city centre), as well as the smaller Groundlings Theatre housed in a wonderful Georgian building.

Following a good night's rest you should be ready to tackle day two, where you could take a boat ride out to the historic Solent Forts. These 150-year old fortifications have been transformed into luxury hotels, which also offer food and drink packages to day visitors. If you think the boat trip across is thrilling, just wait until you see what's inside...



GARAGE LOUNGE



LIVE MUSIC



NO MAN'S FORT



SOUTHSEA BEACH

SUMMER FAMILY FUN



There's nothing like a summer holiday by the sea, but there's more to Portsmouth than sticks of rock and fairground attractions. Here, you'll find world-leading attractions and a year-round calendar of events that really puts Portsmouth on the map.

Every August bank holiday, the Victorious Festival takes over Southsea Common for a weekend of family fun and big-name acts. More than 120,000 revellers fill out the three-day event, which in recent years has welcomed the likes of Noel Gallagher, Manic Street Preachers, Madness, Dizzee Rascal and Olly Murs. There's also a full schedule of family-friendly activities set within a designated area of the site, making it one of the best family festivals in the country.

Portsmouth is also home to Land Rover BAR, the British sailing team launched by Sir Ben Ainslie to bring the most prestigious award in sailing – the America's Cup – home. This means the Solent isn't just the team's training ground, but also the location for World Series racing events, which welcome teams and tourists from across the globe.

If you fancy getting on the water yourself instead of watching from the sidelines, why not take advantage of the good weather and embark on a harbour tour? Here you'll see Portsmouth from the sea, including many of the navy ships based in our port. Alternatively, for the more adventurous explorers there's always the white-knuckle rib rides, which themselves offer various packages to suit all needs.

Of course, when the sun comes out it's just as attractive a proposition to relax by the sea as it is to go out exploring. With over three miles of beach running along Portsmouth's south coast, you should easily find a place to rest, even on the busiest of summer days. Or, for that extra bit of luxury, why not spend a Friday evening inside Henry VIII's Southsea Castle, where the Champagne Bar serves up cold fizz and live entertainment.



LAND ROVER BAR



MADNESS, VICTORIOUS FESTIVAL 2017



ONBOARD RIB RIDE

TEN TOP ATTRACTIONS



SKY WALK, EMIRATES SPINNAKER TOWER

EMIRATES SPINNAKER TOWER

Discover stories within the view from the top of Britain's best viewing tower.

Begin on the ground floor and watch an animated film showcasing the personalities that make Portsmouth the Great Waterfront City it is today. Then take the lift 100 metres up to explore one of the most fascinating seascapes and landscapes, spanning 23 miles and over 1700 years of history. Discover the secrets and stories within the view using the i-VIEW interactive touchscreens. Venture across the amazing glass Sky Walk then head up to the Sky Garden – open to the elements and the energising sea breeze. Those looking for a special treat can enjoy one of the tempting drinks experiences or High Tea packages available in The Clouds (must be pre-booked).

www.spinnakertower.co.uk

PORTSMOUTH HISTORIC DOCKYARD – WHERE ADVENTURES BEGIN

As the masts of the Victorian pioneering iron-clad battleship HMS Warrior 1860 loom into view, you know you are in for a treat.

Walking through Victory Gate into Portsmouth Historic Dockyard you enter a very special place, surrounded by The National Museum of the Royal Navy's world famous ships, magnificent museums and historic buildings which transport you back through the centuries.

New for this year will be a cast of colourful characters to entertain daily, tell stories and enchant you with tales of our glorious naval past.

If you're lucky, you will get the very best view of the country's newest aircraft carrier, HMS Queen Elizabeth from the

world's most famous warship, HMS Victory. Watch the engineering-first to encase Victory's hull in rods of steel, to protect her for the next 250 years. She is nestled alongside the Tudor must-see, the Mary Rose.

Visitors can see what it really takes to be one of the elite corps of Royal Marines and test their speed, stamina and courage at Action Stations, home to the new Making of a Royal Marine Commando challenge. Take flight in the helicopter simulator and run the Ninja Force course before climbing to the top of the 8m tall mast in Boathouse 4.

As the country commemorates the centenary of the end of the First World War, let the battle-worn heroes of Jutland tell their tale in the blockbuster exhibition 36 Hours: Jutland 1916, The Battle That Won The War. Then be immersed in the thrilling audio visual experience projected in the engine room



THE MARY ROSE

of First World War survivor, “the lucky ship” HMS M.33 that echoes the drama of the Gallipoli Campaign 1915.

A free seasonal waterbus goes across the water to Gosport’s Explosion Museum of Naval Firepower and the Royal Navy Submarine Museum where visitors can squeeze into the tight spaces of the cold war submarine, HMS Alliance and wonder at life under the waves.

Get out on the water on the Harbour Tour; always a real favourite and an unforgettable way to see one of the world’s busiest and most historic harbours. There is something new and different every time you hop on board, especially now the aircraft carrier is in her home port.

Open all year round, Portsmouth Historic Dockyard is the place to bring the family, celebrate birthdays and special occasions. Spend holidays here, enjoy weekends and days off and have great fun in amazing surroundings.

www.historicdockyard.co.uk

THE MARY ROSE, PORTSMOUTH HISTORIC DOCKYARD

The new-look Mary Rose experience opened in 2016. It gives visitors stunning panoramic views of Henry VIII’s favourite warship which sank in July 1545 and was raised from the seabed in 1982. The Museum tells an emotionally captivating story of life in Tudor times, bringing

the personal stories of the crew to life through thousands of artefacts and mesmerising storytelling on board. The museum offers a totally immersive experience, visitors can view the ship and filmed projections of the crew from nine galleries and breathe the same air as the Mary Rose on the upper deck.

www.maryrose.org

GUNWHARF QUAYS PREMIUM OUTLET SHOPPING

Gunwharf Quays offers a more relaxed approach to shopping that makes it the perfect day-out destination. Along with great designer outlet stores, the centre also offers over 30 restaurants, bars and coffee shops. You can have a lazy lunch in Loch Fyne, enjoy French cuisine in Brasserie Blanc, share a platter in Nando’s or relax in one of the many waterfront bars.

You can also visit the 14-screen multiplex Vue cinema, 26-lane Hollywood Bowl, Grosvenor casino and Aspex art gallery. Furthermore, why not book a blast out on the Solent with Onboard Charter, and during school holidays there is the opportunity to set sail at the Miniports and enjoy vintage fairground rides.

www.gunwharf-quays.com

 Emirates Spinnaker Tower
Stefan & Sara Venter
www.upixphotography.com

 The Mary Rose
Hufton + Crow
www.huftonandcrow.com



HMS WARRIOR 1860



HMS VICTORY AND MARY ROSE MUSEUM



GUNWHARF QUAYS

THE D-DAY STORY

The new D-Day Story opens spring 2018 and is hotly anticipated to be the new 'must visit' museum in the South East. The museum will tell the story of D-Day in World War Two—from the preparation and build up, to the landings on the beaches in northern France and the Battle of Normandy. This compelling story is told through the perspectives of the people involved, using authentic objects, interactives and video.

The impressive 83-metre Overlord Embroidery offers a fantastic finale to the visit, including the new 'Legacy' and 'Making of the Embroidery' galleries. Objects in the museum displays are authentic to D-Day itself. It includes period vehicles: LCPV Landing Craft, DUKW amphibious truck, and a Sherman BARV breakdown recovery vehicle.

The museum is fully accessible, including the D-Day Story shop and café. Open daily from Spring 2018.

www.theddaystory.com

CHARLES DICKENS' BIRTHPLACE MUSEUM

Charles Dickens was born in Portsmouth in 1812. You can learn more about the celebrated author of *Oliver Twist*, *Nicholas Nickleby* and many other novels by visiting the home in which he was born.

This small house in the heart of the city is where the great author's life started and is a fascinating look into his humble beginnings. Open Friday to Sunday, April to September with an additional opening on Dickens' birthday, 7 February.

www.charlesdickensbirthplace.co.uk

HENRY VIII'S SOUTHSEA CASTLE

Southsea Castle was part of a series of fortifications built in 1544 by King Henry VIII to protect the country from invaders. This fascinating site is where the king watched his favourite warship, the *Mary Rose*, tragically capsize and sink in 1545.

Explore the Castle Keep and take in the panoramic views from the Ramparts across the Solent to the Isle of Wight. Enjoy a spot of lunch or a relaxing dinner at the Castle's Courtyard café, treat yourself at the Waterfront Gifts shop or visit the on-site micro brewery and buy some beer to take home. This free seafront attraction is open from March to October (Courtyard café open all year).

www.southseacastle.co.uk





HENRY VIII'S SOUTHSEA CASTLE



PORTSMOUTH MUSEUM

With free admission, Portsmouth Museum is a popular attraction for the whole family and a great introduction to the city of Portsmouth. Discover how life in the city has changed from the 17th century to the present day. Explore the fabulous fine and decorative art collections. Investigate 'A Study in Sherlock', the story of Sir Arthur Conan Doyle's time in the city and the creation of his famous detective. A further Sherlock Holmes exhibition will open in the museum in February 2018, offering visitors the chance to discover more about the creation of this iconic detective.

www.portsmouthcitymuseums.co.uk

THE FORTS

Discover the national collection of artillery at Fort Nelson, strategically positioned with panoramic views atop Portsdown Hill. Explore 19 acres of ramparts, outer fortifications, secret underground tunnels, and ammunition bunkers at this fully restored Victorian fort. Visit between 13 April – 24 June to view Poppies: Wave as part of the Poppies Tour.

www.royalarmouries.org

Nearby Fort Purbrook and Fort Widley are activity centres offering diverse and accessible facilities.

Portchester Castle provides the perfect setting for a relaxed, fun, historic day out. The most impressive and best-preserved of the Roman 'Saxon Shore' forts, Portchester Castle was originally built in the late 3rd century. The castle's commanding location has made it a major factor in the Solent's defences for hundreds of years.

www.englishheritage.org.uk

OLD PORTSMOUTH

Take a walk along the Millennium Promenade and discover the historic fortifications at the entrance to Portsmouth Harbour including the Square Tower – built in 1494 as part the defences and as a home to the Governor of Portsmouth, the tower was converted to a gunpowder store in 1584 and restored to its present condition between 1979 and 1986. Now it's host to a year-round programme of events. For more information visit:

www.squaretower.co.uk

Visit the creative quarter Hotwalls Studios and eatery The Canteen, where

the city's historic fortifications have been transformed into thirteen working studios and a waterfront dining space.

www.hotwallsstudios.co.uk

Take time to view Portsmouth's Anglican Cathedral (St Thomas's) and the nearby Garrison Church which has stood in Portsmouth for nearly 800 years serving as a medieval hospital, Tudor ammunition store and church for the forces since the 1580s. Although the nave was badly damaged in a 1941 fire-bomb raid on Portsmouth, the chancel remains roofed and furnished.

www.portsmouthcathedral.org.uk
www.english-heritage.org.uk





SOUTHSEA BEACH



BUTTERFLY HOUSE, NATURAL HISTORY MUSEUM



CLARENCE PIER

BESIDE THE SEASIDE

Southsea seafront is perfect for family fun, with the beach stretching from Old Portsmouth to Eastney. Treat yourself to an ice-cream on the sunny promenade, looking out across the Solent, Europe's busiest waterway. On any given day you can spot ferries, warships, liners, oil tankers and Tall Ships on the water. Southsea Common, adjacent to the beach, is a vast green open space ideal for kite flying, picnics and informal ball games.

BEACH HUTS

Make the most of your time by the sea with a traditional beach hut right on the water, now available for weekly hire.

BLUE REEF AQUARIUM

Explore the underwater world at Blue Reef – from sharks to clownfish, jellyfish to otters, there's plenty to see. Take in the colourful and exotic inhabitants of the coral reef in our spectacular underwater tunnel and come face to face with the wonders of the aquatic world. Explore the planet's rainforests as you encounter

some of the most amazing amphibians – from deadly poison dart frogs to curious iguanas. With more than 40 different displays, the biggest decision you make will be who to see first!

In warm weather enjoy the Blue Reef Beach Club with its sandy beach, rock pool, sandpit and outdoor splash play area.

www.blureefaquarium.co.uk

CANOE LAKE

This fun, family spot is popular for crabbing, pedalos and picnics. With a model village, play park complete with water splash and choice of cafes it's a must on sunny days.

CUMBERLAND HOUSE NATURAL HISTORY MUSEUM

Just by Canoe Lake is Cumberland House, Portsmouth's natural history museum, including a brand new butterfly house. Meet the resident iguanodon, find out about Portsmouth's local wildlife including the observational beehive and

explore the variety in the natural world in the A-Z of Natural History display.

Free entry, open all year – butterflies on wing between March and October.

www.portsmouthnaturalhistory.co.uk

THE PIERS

A trip to the seaside wouldn't be complete without a walk along the pier. The newly renovated South Parade Pier is ideal – offering spectacular views out across the Solent, plus a restaurant, shops, pop-up eateries and an arcade. The Gaiety Bar also hosts functions and events throughout the year.

Further along the seafront you'll find Clarence Pier, one of the largest amusement parks on the south coast, boasting a wide range of rides and activities for the whole family. Indulge the kids with a few wild rides or head indoors to Pirate Pete's adventure play area.

www.clarencepier.co.uk

the world's most personal tudor experience

500 years.
a heartbeat away.



visit www.maryrose.org for more information and to book tickets



START YOUR VISIT ON A HIGH

Experience the South Coast's Most Spectacular View



**BOOK ONLINE
SAVE 10%**

Situated in Gunwharf Quays Retail Shopping Outlet
10 minutes from Portsmouth Historic Dockyard

SPINNAKERTOWER.CO.UK    

continuum
attractions



EMIRATES SPINNAKER TOWER

AUTUMNAL ESCAPE



If you'd rather leave out the summer hustle and bustle, to instead explore Portsmouth at your leisure, autumn is the ideal time to discover a stiller, more atmospheric city.

No better can this be illustrated than atop the Spinnaker Tower, where the autumn evenings offer the chance to not just see Portsmouth and its harbour by day, but also as night falls. Take in the city and sea panoramas as dusk falls, maybe even enjoying a bite to eat or something to drink from The Clouds – a café set 100m above sea level.

From here it's just a short walk across to Old Portsmouth, where there are plenty more top-quality restaurants and historic pubs to while away those golden autumn evenings. The seafood offer is especially worth exploring, as much of what's on offer will be caught fresh that day, and brought back to Viviers Fish Market, also set just within Old Portsmouth.

After a bite to eat and local ale, why not take a stroll along the Millennium Promenade to Southsea Castle. It couldn't be easier to follow this walk, as there's a chain motif set into the pavement to show the way. There are also plenty of information points dotted along the route, showcasing some of the historical significance of the area.

Once you get to Southsea Castle (designed by Henry VIII himself), there's much to explore. Inside there's information on the castle's history, from when it was built in 1544, right through to today. Up on the Keep there are more sea views, looking out across the Solent to the Isle of Wight. Back down on ground level there's the Courtyard café, Waterfront Gifts shop and even a micro brewery.



THE CLOUDS, EMIRATES SPINNAKER TOWER



HENRY VIII'S SOUTHSEA CASTLE



ABARBISTRO, OLD PORTSMOUTH



ICERINK, GUILDHALL SQUARE



FESTIVAL OF CHRISTMAS, PORTSMOUTH HISTORIC DOCKYARD



HMS WARRIOR 1860

WATERFRONT IN WINTER



Brighten up your winter with a trip to Portsmouth; there's plenty going on throughout the season.

Whether rain or shine you can't go wrong with a trip to Gunwharf Quays. Many of its shops, bars and restaurants are under cover, and so too is its car park. With designer labels at up to 60% off RRP, you should easily be able to tick off your Christmas shopping list without breaking the bank. The designer outlet also has a vibrant events schedule, with Christmas and New Year things to do, alongside its immensely popular firework celebrations.

Gunwharf doesn't shut when the shops close, however. There's a buzzing nightlife scene offering clubs and bars too, as well as a 26-lane bowling alley and 14-screen cinema. With all this considered it's little wonder that many visitors make a point of putting Gunwharf Quays high on their visit itinerary.


Just a short hop across from Gunwharf Quays is Portsmouth Historic Dockyard, another jewel in the city's crown. Visitors can discover centuries of maritime history and stand on the exact spots where key British military decisions were made. You can explore the newly renovated Mary Rose Museum and see the ship displayed like never before, even heading through the air lock to share the same air for the very first time. Next, take a walk around HMS Victory, HMS Warrior 1860, HMS M.33 and much more, to follow in the footsteps of British heroes such as Admiral Lord Nelson. Wintertime is ideal for a visit to the Dockyard, as it hosts the Festival of Christmas. This event sees the Dockyard streets transformed into a Dickensian winter wonderland, with market stalls,



FESTIVE MARKETS

character actors, live music and loads more. Plus, all the usual Dockyard attractions are included in the entry price.

In the run up to Christmas enjoy festive markets and ice skating on real ice in front of the impressive Portsmouth Guildhall. Warm up with a hot chocolate in the Alpine Café Bar.

 Emirates Spinnaker Tower
Stefan & Sara Venter
www.upixphotography.com
Abarbistro
Emma Trinder
www.emmatrinder.com

FOOD GLORIOUS FOOD

From quirky independent cafes and pop-up street food, to fine dining and al fresco eating with fabulous sea views, Portsmouth offers a full menu of eating opportunities.



SEA VIEWS, TOP RESTAURANTS AND WORLD CUISINE

Many restaurants at Gunwharf Quays and Port Solent boast glorious terraces overlooking the harbour and marina respectively.

When it comes to dining out, Gunwharf Quays has something to suit every taste bud, with over 30 restaurants such as Brasserie Blanc, Loch Fyne and Las Iguanas. Enjoy a laid back lunch, family meal or just catch up with friends.

For Southsea sea views, head to the Courtyard Café, set in Henry VIII's historic Southsea Castle or beach side eateries including Southsea Beach Café and Mozzarella Joes.

Restaurant 27 and Montparnasse in Southsea both offer exceptional fine dining. For something less formal, eat your way around the world at quirky cafés, brasseries, bistros and bars, with food choices including English, Belgian, French, Greek, Indian, Italian, Japanese Korean, Lebanese, Mexican, Spanish, Thai and Turkish!

In July the Southsea Food Festival offers food markets, tastings, demonstrations and live music.

CAFÉ CULTURE

Portsmouth has a great cafe offer from the traditional to the unusual and unique. Wander down to Pie and Vinyl in Castle Road for a hearty, locally supplied pie and browse through the impressive supply of vinyl records on sale. Choose from a wide range of coffee houses and tea rooms, including Southsea Coffee, the Parade Tea Rooms and the Tenth Hole.



CAMBER DOCK



GUNWHARF QUAYS

OLD PORTSMOUTH

In Old Portsmouth traditional pubs and quaint tea rooms line the cobbled streets. Experience the quiet life here; explore the Camber Dock and ramparts then indulge in some home-cooked food at a pub overlooking the harbour. Sip wine al fresco in the summer or enjoy a coffee by a cosy fire in the colder months.

GREAT LOCAL PRODUCE

Hampshire Farmers Markets come to the city once a month so it's easy to take a taste of the county's finest home with you. You can't visit a waterfront city without a taste of the ocean. The vibrant fish market in Old Portsmouth is the place to find the day's fresh catch. Or why not enjoy traditional fish and chips by the sea? Pick up a seaside supper on the waterfront and watch the sun set.



TENTH HOLE CAFÉ



SOUTHSEA CASTLE COURTYARD CAFÉ

This is just a flavour of Portsmouth's food offer, explore www.visitportsmouth.co.uk for more mouth-watering choices.



Tenth Hole Café
Emma Trinder
www.emmatrinder.com

Camber Dock
Richard Perrin

FABULOUS ART AND CULTURE

From live music to high drama, great events, literary highlights and comedy to make you laugh until it hurts, Portsmouth's cultural programme offers something for everyone.

For lovers of literature the annual **Bookfest Festival** – 12 February – 3 March – offers a range of events including an audience with Peter James, Teddy Bear picnics, writing workshops and Portsmouth Mystery Fest – a day of panels and talks from a host of crime authors and experts.

A new exhibition opens in Portsmouth Museum in February, exploring the connection between the city of Portsmouth and the creation of the Great Detective **Sherlock Holmes**, by Sir Arthur Conan Doyle. Showcasing a range of material from The Arthur Conan Doyle Collection, Lancelyn Green Bequest, it will trace the development of Conan Doyle's career as a writer from his first arrival in Southsea, up to and including him writing the first two Holmes novels –

A Study in Scarlet and The Sign of Four – and the early stages of the global Sherlock Holmes phenomenon.

Along with the 'A Study in Sherlock' exhibition this makes Portsmouth Museum the place to find out more about this world famous fictional detective.

The Big Mouth Comedy Festival lands at Portsmouth Guildhall on 10 & 11 March with a line up guaranteed to have you rolling in the aisles including Russell Kane, Andy Parsons, Seann Walsh, Paul Zerdin, Alistair McGowan, Barry Cryer with Colin Sell, and more.

Plus don't miss the chance to relive memories of the BBC comedy classics; Blackadder and Red Dwarf, with the legendary 'Baldrick', Sir Tony Robinson and stars of the ship's computer;

Norman Lovett and Hattie Hayridge. www.bigmouthcomedyfestival.co.uk

Emirates Spinnaker Tower, Wedgewood Rooms, Kings Theatre and New Theatre Royal also offer comedy nights and top acts all year round.

Portsmouth Guildhall's new **Comic Con** takes place 5 & 6 May, showcasing the best in comic book illustration, TV, film, gaming and pop culture entertainment, providing fun for aficionados, lifelong fans and families alike. Glimpse behind the scenes of Star Wars, Game of Thrones and Doctor Who! www.portsmouthcomiccon.com

In June the city's annual 10 day cultural festival, **Portsmouth Festivities**, takes place. Showcasing the art, culture and heritage of Portsmouth, the festival



Victorious Festival 2017, Castle Stage
Tom Langford
www.tomlangfordphoto.co.uk





BOURNEMOUTH SYMPHONY ORCHESTRA



A STUDY IN SHERLOCK, PORTSMOUTH MUSEUM

includes music, theatre, dance, art, literature, talks, film, outdoor events and family activities.

In December the city offers great Christmas entertainment. A fabulous day out gets even better when you add festival fun to the world class attractions in Portsmouth Historic Dockyard, with street markets, live entertainment, Fagin's pub and snow there's no better way to kick off the festive season!

Enjoy ice skating in front of the impressive Portsmouth Guildhall – on real ice – and relax afterwards in the Moguls Alpine Bar.

For some fabulous festive entertainment treat yourself to a traditional pantomime, Christmas carol concert or Christmas Proms at the city's venues.

VIBRANT MUSIC SCENE

Victorious Festival, the UK's biggest metropolitan festival, will return to Southsea Seafront – 24 – 26 August 2018.

Having been shortlisted for 'Best Major Festival' at the UK Festival Awards for several years running and with past heavyweight headliners such as Madness, Stereophonics, Elbow and Noel Gallagher's High Flying Birds amongst others, the festival continues to grow bigger than ever making it an unmissable event.

Set in a stunning seaside location overlooking the Solent the festival also plays host to a Champagne Bar in Henry III's Castle, a Victorian Bandstand, views of the Spinnaker Tower, a Real Ale Arena, market stalls aplenty, a huge FREE Kids Arena and food from all over the world.

For prices and more information please visit – www.victoriousfestival.co.uk

Icebreaker Festival – 2 & 3 February – now including Friday night and all day Saturday, the festival showcases more than 150 new and unsigned acts playing at up to eleven intimate Southsea venues. www.icebreakerfestival.com

Mutiny Festival returns to Portsmouth this May, bringing a vibrant line up of dance, hip-hop, house, garage and drum & bass and creating a carnival-like atmosphere. www.mutinyfestivals.co.uk

The city also boasts great venues. Portsmouth Guildhall has a varied and packed calendar of music from rock and pop to the Bournemouth Symphony Orchestra. The Wedgewood Rooms and Pyramids Centre also offer gigs and concerts to suit every musical taste.

For full details of Portsmouth's packed music schedule including free live music throughout the summer at the Bandstand on Southsea seafront go to www.visitportsmouth.co.uk





ASPEX GALLERY

A NIGHT AT THE THEATRE

Portsmouth is home to wonderful theatres offering a range of dramatic live entertainment. The dignified and beautiful Kings Theatre, with its Italian Renaissance style of decor, is one of the most complete Matcham theatres in the country. It plays host to touring West End productions and a varied programme of opera, ballet, comedy, drama and music.

The newly renovated and much-loved New Theatre Royal in the heart of the city has enjoyed a long and fascinating history since first opening in 1856, and along with the Kings, is one of the few working Matcham theatres in the country. It is home to cutting edge dance, theatre, drama, music, comedy and children's performances and events.

Both theatres also offer special behind-the-scenes tours.

Groundlings Theatre is an exciting arts venue in Portsmouth based in the stunning Beneficial School. Events including plays, productions and Murder Mystery evenings run throughout the year as well as ghost hunts.

ARTISTIC LICENCE

Aspex Gallery in Gunwharf Quays presents an outstanding exhibition programme featuring works by contemporary artists from around the world. Aspex is also a great place to see Portsmouth's freshest artistic talent. Soak up the atmosphere in this former naval storehouse and make time for a coffee or bite to eat in the café.

Portsmouth Museum is home to fine and decorative art galleries. Spend time visiting the rest of this free museum and enjoy tea and cake in the beautiful gardens.

Hotwalls Studios in Old Portsmouth brings artists and designer-makers together in an exceptional heritage location. The glazed studios allow you to watch some of the city's most creative individuals at work. Purchase professional pieces from the artists and makers themselves at one of the Open Studios events on the third Sunday of each month.

 New Theatre Royal
Anthony Wright



KINGS THEATRE



GROUNDLINGS THEATRE



NEW THEATRE ROYAL



WATERFRONT CAFÉ

at Emirates Spinnaker Tower

- › Delicious menu of hot and cold meals and snacks
- › Seasonal menus and locally sourced suppliers
- › Uninterrupted views over Portsmouth harbour

Situated in Gunwharf Quays Retail Shopping Outlet
10 minutes from Portsmouth Historic Dockyard

SPINNAKERTOWER.CO.UK

NEW THEATRE ROYAL PORTSMOUTH

Entertaining Portsmouth audiences since 1856

Box Office: 023 9264 9000
newtheatreroyal.com

20 - 24 Guildhall Walk, Portsmouth, PO1 2DD

KINGS THEATRE PORTSMOUTH

ALWAYS ENTERTAINING

For over 110 years, the Kings Theatre has been a hub of entertainment for the people of Portsmouth and beyond

KINGSPORTSMOUTH.CO.UK
023 9282 8282

COMING IN 2018

Peppa Pig Live! The Sound of Music
Russell Watson The Nutcracker Flashdance
Son of a Preacher Man Mamma Mia!
Awful Auntie Madagascar - A Musical Adventure

Kings Theatre @KingsTheatre

Discover aspex
Portsmouth's leading contemporary art gallery

Find us in Gunwharf Quays

Open Weds - Sun
11.00 - 16.00hrs
www.aspex.org.uk

World Class Concerts & Events

- MUSIC • COMEDY • CLASSICAL •
- DANCE • FAMILY •
- FREE EXHIBITIONS •
- CAFE • WORKSHOPS •

Come inside today!

portsmouthguildhall.org.uk

There's a different
KIND OF MAGIC
in Dubai



DON'T JUST VISIT, LIVE IT.

From dancing fountains to underwater worlds, a lifetime of memories awaits you in Dubai. Book your flight today at emirates.com/uk

Hello Tomorrow



Emirates

WHAT'S ON IN PORTSMOUTH 2018

Here's a flavour of our events in 2018.
Some event details may change, so
check www.visitportsmouth.co.uk
for full listings and updates.



JANUARY

- The Simon and Garfunkel Story, Portsmouth Guildhall
- Peppa Pig's Adventure, Kings Theatre
- The Nutcracker, Kings Theatre
- Mr Scruff, Wedgewood Rooms
- Burns Night Celebration, HMS Warrior 1860
- Holocaust Memorial Event



FEBRUARY

- Portsmouth Bookfest, various venues
- Spamalot, New Theatre Royal
- Icebreaker Festival, various venues
- Roni Size, Wedgewood Rooms
- The Amazons, Portsmouth Pyramids
- Valentine's Comedy Nights, Emirates Spinnaker Tower
- Valentine's High Tea and Love Bites, Emirates Spinnaker Tower
- Half Term Tales from the Sea, Emirates Spinnaker Tower
- Portsmouth Coastal Half Marathon, Southsea Seafront
- Tudors in Love, Mary Rose Museum

MARCH

- Flight of the Conchords, Portsmouth Guildhall
- Big Mouth Comedy Festival, Portsmouth Guildhall
- Science Ahoy, Mary Rose Museum
- Commonwealth Flag Raising Ceremony
- Some Mothers Do Have 'Em, New Theatre Royal
- Jason Manford, Portsmouth Guildhall
- Russell Watson, Kings Theatre
- John Robins, Wedgewood Rooms
- Turin Brakes, Wedgewood Rooms
- Easter Activities, Gunwharf Quays
- Audience with Ian Waite & Oti Mabuse, Portsmouth Guildhall
- James and Ola: Uncensored, Portsmouth Guildhall

APRIL

- Fun family Easter, Emirates Spinnaker Tower
- Jason Donovan, New Theatre Royal
- Andrew WK, Wedgewood Rooms
- Portsmouth Tattoo Fest, Portsmouth Pyramids
- Alice in Wonderland, New Theatre Royal
- Zeebrugge: The Centenary Conference, Portsmouth Historic Dockyard

MAY

- Sky Dining, Emirates Spinnaker Tower
- Mutiny Festival
- Lord Mayor's Seaside Show
- Russell Brand, Portsmouth Guildhall
- Dara O'Briain, Kings Theatre
- Flashdance - The Musical, Kings Theatre
- Half Term Activities, Gunwharf Quays
- Portsmouth Beer Festival, Portsmouth Guildhall
- Charge by Motionhouse Dance, New Theatre Royal
- Great Expectations, New Theatre Royal
- Ronnie Scott's All Stars, New Theatre Royal
- Remembering Fred, Portsmouth Guildhall

PORT SOLENT inset

Queen Alexandra Hospital
Playzone
Cosham Station
Hilsea Lines
The Mountbatten Centre
Hilsea Station
Andrew Simpson Watersports Centre

PORTSMOUTH HARBOUR

continued on main map

Naval Base
Mary Rose Museum
HMS Victory
National Museum of the Royal Navy
Action Stations
HMS Warrior 1860
Gosport Passenger Ferry
Portsmouth Harbour Station
Gunwharf Quays
Millennium Promenade
Spinnaker Tower
Aspex Gallery
Round Tower
Hotwells Studios
Square Tower
Portsmouth Anglican Cathedral
Royal Garrison Church
Spur Redoubt
Pirate Pete's
Clarence Pier
Southsea Common
Blue Reef Aquarium
D-Day Story
Southsea Castle
Pyramids Centre
South Parade Pier

Portsmouth & Southsea Station
City Centre to The Hard
Charter Community Sports Centre
Wimbledon Park Sports Centre

North

Distance in miles
0 1/4 mile
Walking Time in minutes
5 minutes



Key to Quarters

- Central Southsea
- City Centre
- Historic Waterfront
- Port Solent
- Seafront
- University

Key to Buildings

- Hospital
- Shopping
- Sport and Leisure
- University
- Other building
- Parks and open spaces

Key to Attractions

- Aquarium
- Art Gallery
- Caravan Site
- Castle
- Cathedral
- Church
- Cinema
- Football ground
- Historic Dockyard
- Industrial heritage
- Museum
- Pier
- Shopping
- Sports Centre
- Swimming Pool
- Theatre
- Tower or Folly
- Walking Route
- Information Centre

Key to other symbols

- Buses
- Car Park
- Coach Park
- Indoor Play Area
- Millennium Promenades
- Play Area
- Police Station
- Post Office
- Viewpoint
- Park & Ride stop

For Ferries follow symbols

Isle of Wight

- Car
- Passenger
- Hovercraft
- Gospport Passenger

P Parking Information
The car parks listed below are identified on the map by letters and symbols

Controlled Off-street parking

Name	no. of spaces
A. All Saints (D2)	42
B. Ashby Place (C6)	61
C. Broad Street (A5)	29
D. BAR (restricted)	57
F. Southsea Common (C6)	68
G. Clarence Pier (B6)	154
H. Clarence Street (C2)	125
I. Seafront, D-Day (C7)	125
J. Guildhall Walk (C4)	58
L. Gunwharf Quays (B4)	1400
M. The Harbour (B4)	62
N. City Centre South, Isambard Brunel (C4)	485
O. Seafront, Canoe Lake (F7)	146
P. Port Solent (inset A1)	996
Q. Pyramids (D7)	148
R. Seafront, Esplanade (B6)	373
S. Historic Ships (B3)	295

NCP car parks are located at:

- T. Cascades, Charlotte Street (C3)
- U. Station Street (C3)
- V. Crasswell Street (D3) multi-storey
- W. Crasswell Street (D3) surface

Coach Drop-Off point

Coach parking is available at:

- D-Day Museum (C7) 26
- Museum Road (C5) 11
- Port Solent (inset) 8
- St. George's Road (B4) 5

Based on aerial photography and field survey. While every effort has been made to ensure this map is accurate and up to date, neither the publishers or the copyright holders accept any liability for loss or inconvenience incurred as a result of any errors. The representation of any footpath, road or track on this map does not necessarily indicate any right of way.

JUNE

- D-Day Anniversary events, D-Day Story museum
- Portsmouth Festivities, various venues
- Champagne Sundays, Emirates Spinnaker Tower
- David Baddiel, Portsmouth Guildhall
- Teletubbies Live, Kings Theatre
- Seafood Festival, Gunwharf Quays
- Pasha Kovalev: The Magic of Hollywood, New Theatre Royal
- Mamma Mia, Kings Theatre
- Moonlit Memories Walk, Castle Field
- Armed Forces Day
- Gary Barlow, Portsmouth Guildhall



JULY

- Race for Life, Southsea Common
- Southsea Food Festival, Palmerston Road
- Stories from the View, Emirates Spinnaker Tower
- Kevin and Karen, Portsmouth Guildhall

AUGUST

- Victorious Festival, Southsea Common
- Umbrella Festival, Groundlings Theatre
- Kite Festival, Southsea Common
- Madagascar – A Musical Adventure, Kings Theatre



SEPTEMBER

- Portsmouth Triathlon
- G4 Live in Concert, New Theatre Royal
- Awful Auntie, Kings Theatre
- Dave Gorman, Portsmouth Guildhall
- The Play that Goes Wrong, Kings Theatre

FOR EVEN MORE EVENTS AND UPDATES HEAD TO
WWW.VISITPORTSMOUTH.CO.UK



OCTOBER

- Great South Run, Southsea Seafront
- Half Term and Halloween Spectacular, Gunwharf Quays
- Oktoberfest
- Pirates Tales, Emirates Spinnaker Tower



NOVEMBER

- Ice Skate Portsmouth – Ice Rink Guildhall Square (also December)
- Fireworks and Black Friday, Gunwharf Quays
- Nation Remembers – events to mark the 100th anniversary of the end of WW1
- Christmas Lights Switch-ons, various venues
- Sarah Millican, Portsmouth Guildhall
- Ross Noble, Portsmouth Guildhall
- Sister Act Choir, Portsmouth Guildhall



DECEMBER

- Festival of Christmas, Portsmouth Historic Dockyard
- Festive High Tea, Emirates Spinnaker Tower
- Portsmouth Coastal Marathon, Southsea Seafront
- Portsmouth Beer Festival Christmas Sessions, Portsmouth Guildhall
- Father Christmas Experience, Gunwharf Quays
- Peter Pan, New Theatre Royal


Gunwharf Quays

PREMIUM OUTLET SHOPPING

COME FOR THE SHOPPING STAY FOR THE VIEWS

GUNWHARF QUAYS,
PORTSMOUTH HARBOUR



www.gunwharf-quays.com





WHAT'S IN STORE

If you are looking for a unique shopping experience then Portsmouth is the place to find it! From the award-winning Gunwharf Quays and major high-street names in the city centre, to the array of independent, antique and vintage shops in Southsea, you are sure to find what you are looking for and what you can't resist.



GUNWHARF QUAYS PREMIUM OUTLET SHOPPING

Set on Portsmouth's historic waterfront, Gunwharf Quays is the South coast's leading designer shopping outlet where you'll find over 90 famous brands, many international with savings of up to 60% off recommended retail price. As well as men's and women's fashion, there's childrenswear, shoes and accessories, sportswear, homewares, lifestyle, gifting and beauty; in short, a shopper's paradise.

All the big names are here including Hugo Boss, Nike, Karen Millen, Reiss, Ted Baker, Paul Smith, Coach and The White Company. And when you've shopped till you drop, you'll find an array of coffee shops, bars and restaurants to tempt you.

Take a break from your shopping for a visit to the iconic Emirates Spinnaker Tower and be wowed by the amazing views.



GUNWHARF QUAYS

SOMETHING DIFFERENT IN SOUTHSEA

A stone's throw from the beach, Southsea offers distinctive stores selling everything from retro clothing to antique furniture plus regular street markets including Love Southsea markets and a monthly Hampshire Farmers' Market.

Palmerston Road is home to John Lewis and Debenhams, plus other high-street favourites, whilst Marmion Road presents chocolatiers, designer jewellery, boutiques and furniture.

Albert Road is considered one of the city's hidden gems. Find a unique gift from independent home boutiques and check out the stylish hairdressers, antiques and collectables. With a distinctly bohemian feel, the street is buzzing day and night with lively cafés and bars. For a Portsmouth gift to remind you of your visit, treat yourself at one of

the Waterfront Gifts shops at Southsea Castle, Portsmouth Museum, Southsea Library and Portsmouth Hard Visitor Information Point.

HIT THE HIGH STREET

Head to our city centre where there are over 200 stores and the indoor shopping mall Cascades, which is home to some of the biggest brand names in the UK. A traditional street market takes place from Thursday to Saturday, selling fresh produce, flowers and clothing.

SET SAIL FOR PORT SOLENT

With a selection of boutique and branded stores Port Solent marina offers a truly unique shopping experience, treat yourself to something special or find the perfect gift for any occasion.



Albert Road
 Claire Sambrook
www.claresambrook.tk



PALMERSTON ROAD

SPORT IN PORTSMOUTH

Portsmouth is a city with a proud sporting heritage, world-class facilities and a calendar of international events – be it road running at the Great South Run, sailing events in the Solent or home matches at Portsmouth Football Club.





GREAT SOUTH RUN

The Great South Run is a major highlight of the Portsmouth sporting calendar and is recognised as the world's leading 10 mile running event. This fast, flat course is ideal for setting PBs, whilst also taking in some of the city's best scenery – from the beautiful seafront to Nelson's iconic HMS Victory. For one weekend, the roads of Southsea and Portsmouth are opened to athletes of all ages and abilities taking part in one of the scheduled races over two days.

The Great South Run returns to Portsmouth on Saturday 20 and Sunday 21 October 2018.

RUN THIS CITY

Whether you prefer to run the streets, the seafront or the track, Portsmouth has an ideal route for you. With miles of beautiful seafront promenade, Southsea is a runner's paradise, where you can train with a sea-breeze on your back and beautiful views across the Solent towards the Isle of Wight and Hayling Island.

The seafront is also home to Southsea ParkRun, a free, volunteer-led 5k run open to everyone on Saturday mornings. Other running events in the city include the Coastal Half marathon, Pretty Muddy and Race For Life events.

OUT ON THE WATER

As the UK's only island city, Portsmouth is a prime destination for water sports of all kinds.

The Andrew Simpson Watersports Centre is the first port of call for any enthusiast, with courses and access to water-based activities including sailing, rowing, power boating, kayaking, canoeing and paddle-boarding. The centre also houses a 13-metre outdoor climbing tower; one for the brave!

BEST FOOT FORWARD

If travelling on foot is more your style, why not join one of the regular guided walks that the city has to offer? With themes such as Authors of Southsea, Pubs of Portsmouth and the Nelson Trail, you'll know all about the city in no time.

Alternatively, guide yourself around the waterfront following the Millennium Promenade using the chain motif set into the pavement.

For something a little more athletic, how about taking an urban hike along Portsmouth's coast? Climb the ramparts behind Castle Field, then visit Southsea Castle and take the steps to the keep roof. From the castle you can follow the waterfront promenade to the fortifications in Old Portsmouth. Here, it's worth climbing the steps to the Saluting Platform, then upwards again to the top of the Round Tower to take in the harbour views. For those seeking something a little more adrenalin-fuelled, why not book an abseil 100m down from the Emirates Spinnaker Tower to round off your day in style!

PEDAL PORTSMOUTH

Get in the saddle to explore Portsmouth by bike and you certainly won't be disappointed. With miles of dedicated cycle paths, Portsmouth is an amazing city to traverse on two wheels. We also host a growing number of cycling events; check out the visitportsmouth.co.uk website to find out more about these and all city events.

TEeing OFF

Portsmouth boasts two 18-hole golf courses – Portsmouth Golf Centre and Portsmouth Golf Course. Both are available for pay and play, offering outstanding views and affordable sessions on great courses.

GET YOUR SKATES ON

The promenade along Southsea seafront is ideal for in-line and roller skating, whatever your age. It's also worth zipping down to Southsea Skatepark on the seafront, which is home to international-standard ramps. In winter enjoy skating on real ice in front of Portsmouth Guildhall and relax at the Moguls Alpine Bar with a warming drink.

STATE-OF-THE-ART FACILITIES

Portsmouth's Mountbatten Centre is home to an Olympic-sized pool, teaching pool, 150 station state-of-the-art gym, health suite, 8-court sports hall, squash courts, athletics and cycle tracks, and a great programme of activities and events. Next door is Portsmouth Tennis Centre with 4 indoor and 6 outdoor courts.

Pyramids, Portsmouth is a characterful centre on the seafront that offers relaxing spa facilities, fun swimming pools, soft play for under fives, a gym with functional training equipment and 60 weekly fitness classes.

Canoe Lake Leisure tennis boasts four top-specification artificial grass courts, in addition to its newly refurbished grass and hard courts. The centre also houses a brand new pavilion, from which visitors watched some of the world's top-ranked players at last summer's inaugural LTA Aegon Trophy Southsea.

OUTDOOR FAMILY FUN

When the weather's good you can't beat Southsea's seafront. It offers miles of pebble beaches to explore and gigantic green spaces where you can let off some steam and enjoy the sea air.

There are also tennis courts, crazy and mini golf courses, a pitch 'n' putt green and beach volleyball courts to keep you entertained. On warm days the beaches in Southsea are perfect for a paddle, or alternatively you can take the children to the under-eight's splash pool opposite the D-Day Story museum on Southsea seafront, or the water splash at Canoe Lake, for some free fun.

Hilsea Lido offers seasonal outdoor swimming, diving and a splash pool. Dating back to the 1930s, the Lido is found in the beautiful setting of Hilsea Lines.



ENJOY THE GREAT OUTDOORS

Portsmouth is the UK's only island city, surrounded by miles of coastline and seafront walkways.

SOUTHSEA COMMON

Southsea Common, a 100-acre expanse of grassland, is situated right on the seafront. In summer you can take advantage of the warm weather by packing up a picnic bag and heading down for the day, letting off some steam with a game of rounders, flying a kite, or just lazing around in the sunshine.

In recent years, the Common has hosted a number of high-profile events, including Victorious Festival, the Louis Vuitton America's Cup World Series Race Village and one of Europe's premier kite festivals.

FARLINGTON MARSHES

For nature spotters, there are few better places to catch a glimpse of seabirds than Farlington Marshes. One of The Royal Society of Wildlife Trusts' oldest reserves, this marshland is internationally important for the bird population that it supports – including the sedge, bearded tit and reed warbler. In addition, there are rare and unusual flowering plants on the marshes, such as the sea barley and corky-fruited water dropwort.

HILSEA LINES

The area colloquially known as Foxes Forest started life as 18th and 19th century fortifications, running along the northern stretch of Portsea Island. Now, the designated 'scheduled monument' is a favourite for walkers, joggers, cyclists, anglers, and nature spotters alike. There are two main walks along the lines, which both run alongside the Hilsea Lagoon. The inland walk is predominantly covered by a tree canopy and runs parallel with the old fortifications. On the other side is a walk along the flood defences, which are raised and more open for views.





FARLINGTON MARSHES



SOUTHSEA COMMON



MILTON COMMON

MILTON COMMON

If Southsea Common is the lively, popular outdoor space, Milton Common is the place to get away from it all. This huge area of land was reclaimed from the sea and has since been allowed to grow into a semi-natural space – meaning it’s a slightly more rugged alternative. All this means you don’t have to venture far through the scrubland before it’s easy to forget you’re still in a city.

The nature on offer at Milton Common also belies its city location. At its peak, the wider area can be home to 6.5% of the entire global population of Brent geese. It’s also part of a habitat for in excess of 90,000 waders.

Countless walks and paths criss-cross the common’s 113 acres, so it’s easy to take a different route with each visit – and have a quiet time doing so.

MOUNTBATTEN CENTRE, ALEXANDRA PARK AND HILSEA BASTION GARDENS

The walking route from Hilsea Bastion Gardens to the Mountbatten Centre is a flat, paved route with parkland on one side and open water along the other. As such it’s popular with runners and cyclists alike, and has separate lanes for both. Portsbridge Creek, which separates this route from the M275, is popular with wading birds which feed on the exposed mudflats.

SEAFRONT

Around Southsea you have the more commercial coastline, with the amusements and fairground at Clarence Pier keeping the British seaside tradition alive. Slightly further east is Southsea Castle, where Henry VIII watched his beloved Mary Rose sink to the bottom of the Solent. Further along again takes you to quieter, dog-friendly stretches of beach at Eastney.

The western coast of Portsea Island is the working side, with the Historic Dockyard, Portsmouth International Port and Whale Island military base all situated here. Across on the eastern flank, though, it’s more of a rambler’s paradise. Here you’ll find Milton Common, numerous sporting grounds and a coastal walk that can take you right off the island. In fact, it’s possible to walk from Gunwharf Quays, to Old Portsmouth, along the Southsea Seafront, through Milton, up the Eastern Road, along Hilsea Lines and down to Alexandra Park, crossing only a few roads and rarely losing sight of the sea.





TRAVEL INFORMATION

Portsmouth is a key international gateway, ideally situated on England's south coast.



PLANNING YOUR JOURNEY

With a motorway into the heart of the city, an international port, a rail network direct to London in just 90 minutes and international airports close by, access to Portsmouth couldn't be easier, whether you are coming to the city from within the UK or overseas.

The new Portsmouth transport interchange at The Hard is located right next to Portsmouth Harbour train station, Gosport and Wightlink ferry services and a 5 minute walk from Portsmouth Historic Dockyard and Gunwharf Quays. Inside you will find the Portsmouth Visitor Information Service, open seven days a week with friendly and informative staff on hand to help you make the most of your visit and navigate your way around the city (see page 46 for full details).

DRIVING

Portsmouth enjoys good road connections; the A3(M) puts London just over an hour away and the M275, which comes right into the heart of the city centre, connects Portsmouth with the M27 and the rest of Britain's motorway network.



Useful sources of travel information to help you plan your journey:

Visitor Information Service at the Hard transport hub

www.visitportsmouth.co.uk

✉ vis@portsmouthcc.gov.uk

☎ 023 9282 6722

www.myjourneyportsmouth.com

National Express:

www.nationalexpress.com

☎ 08705 808080

MegaBus:

www.megabus.com

National Rail Enquiries:

☎ 08457 484950

PARK & RIDE

Portsmouth's Park and Ride is ideally situated on the M275 as you drive into the city and offers visitors and out-of-town shoppers a quick, easy and affordable way to visit. Stops include the city centre shopping area and The Hard for Gunwharf Quays and the Historic Dockyard.

www.parkandride.portsmouth.gov.uk

RAIL

Portsmouth offers direct rail services to and from London Waterloo and London Victoria and is well connected to the UK's major cities. Visitors arriving at London Waterloo are only a short walk from the River Thames, the London Eye, and landmarks such as Big Ben and the Houses of Parliament.

AIR

Portsmouth is easily accessible by air. It's just 22 miles to Southampton International Airport (www.southamptonairport.com) and the major London airports Gatwick and Heathrow are both 60 miles away with easy rail access to the city.

PORTSMOUTH INTERNATIONAL PORT

Portsmouth International Port is the perfect gateway to France, Spain, the Channel Islands and a host of cruise destinations. The passenger terminal offers the modern high standards and style of an airport terminal. Regular ferry services sail to Caen, Cherbourg and Le Havre in Normandy and St Malo in Brittany, for city breaks and easy onward travel throughout France.

Spanish destinations are Santander and Bilbao and there are also frequent sailings to Jersey and Guernsey. If you are coming to Portsmouth to catch a ferry, make sure you arrive in plenty of time to check out the many attractions in the city, start your holiday early with a day enjoying Portsmouth.

ISLE OF WIGHT

Travelling to and from the Isle of Wight couldn't be easier. Hovertravel operate a hovercraft from Southsea to Ryde, the world's only, year-round, passenger hovercraft service.

Wightlink operate a car ferry service from Portsmouth to Fishbourne and a foot passenger catamaran service from Portsmouth Harbour to Ryde Pier.

CRUISES

Portsmouth International Port has an increasingly impressive cruise offer. Major operators and cruise lines have chosen Portsmouth for its superb position and impressive facilities, offering customers inspiring destinations aboard beautiful luxury liners. Cruise calls to the city offer passengers the opportunity to explore the city's wealth of attractions, great shopping, dining and entertainment.

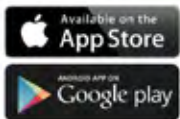
WALKING AND CYCLING

The city is flat and compact, making walking and cycling good and convenient modes of transport. Travel to the city by public transport or park up your vehicle and explore the city on foot or bike, with trails to follow so you can discover more about the city's history en route. Bike hire is available at Dirt to Road in Southsea and at Portsmouth Hard transport hub.

VISIT THE
ISLE OF WIGHT
BY HOVERCRAFT

JUST
10 MINUTES
ACROSS THE
SOLENT

For Day Trips & short breaks, attractions, dining out & beautiful sandy beaches



@hovertraveltd
/hovertraveltd
info@hovertravel.com



Southsea Hovertravel Terminal, Clarence Esplanade, Southsea

aquacars

driving the great waterfront city

TAXI

Call Us Now 02392

654321 OR 818123

TRY OUR **NEW** APP!

Contactless Payments

 Free Download from the App Store!

  **ALL MAJOR CARDS ACCEPTED**  

Serving the community for over 30 years



bluereef
AQUARIUM PORTSMOUTH

From Sharks and Stingrays to magical Moray Eels, Blue Reef Aquarium brings the magic of the undersea world alive.

Journey through the underwater tunnel below the giant Sea of Cortez with its hundreds of colourful fish. More than 40 living displays and the amazing Otter Holt provide an unforgettable experience.

KIDS FOR A QUID*

*One Junior for £1 with a full paying standard ticket per one voucher. Cannot be used in conjunction with any other offer, discount, family or online ticket. Tickets must be purchased on the door. Expiry date 31/12/18.

www.bluereefaquarium.co.uk/portsmouth
Clarence Esplanade, Southsea, Portsmouth, PO3 3PB
Email: portsmouth@bluereefaquarium.co.uk Tel: 023 9287 5222

PORTSMOUTH
CITY OF
MUSEUMS

On your next visit to Portsmouth, why not visit:

Southsea Castle www.southseacastle.co.uk	Cumberland House Natural History Museum www.portsmouthnaturalhistory.co.uk
Charles Dickens' Birthplace Museum www.charlesdickensbirthplace.co.uk	Portsmouth Museum www.portsmouthmuseums.co.uk

Portsmouth CITY COUNCIL **Portsmouth** the **new** waterfront city

SOARING towers
IMPOSING landmark

ANCIENT CASTLE, STATELY HOME & GARDENS

FOR MORE DETAILS, CALL 01903 882173 OR VISIT WWW.ARUNDELCASTLE.ORG

ARUNDEL CASTLE

There's nothing like...

Beaulieu

National Motor Museum
Palace House & Gardens
World of Top Gear
Beaulieu Abbey

beaulieu.co.uk

Beaulieu | New Forest | Hampshire | SO42 7ZN
01590 612345 Open 10am daily Free Parking



OUT AND ABOUT

Portsmouth is the ideal base to explore England's beautiful south coast.



SUBMARINES AT GOSPORT

A short ferry ride across Portsmouth Harbour is Gosport. There you can go on board a genuine submarine at The Royal Navy Submarine Museum or discover the array of weaponry used by the Navy at Explosion Museum of Naval Firepower – both part of the Portsmouth Historic Dockyard offer. You can also see diving equipment and hovercraft used by James Bond at the Diving Museum and Hovercraft Museum respectively. Why not take a wander through the Little Woodham 17th century village to watch blacksmiths, potters and weavers demonstrate their traditional skills.

SET SAIL TO THE ISLAND

Take the short journey across to the Isle of Wight, where you will find a wealth of attractions including the famous Carisbrooke Castle and Osborne House, once home to Queen Victoria. With regular hovercraft, catamaran and car ferry sailings and crossing times from only 10 minutes, combining your city break with a visit to the Island couldn't be easier.



FRESHWATER BAY, ISLE OF WIGHT

TITANIC MEMORIES

Visit SeaCity Museum in Southampton to remember the tragic tale of the Titanic and discover maritime history brought to life through an interactive experience designed for all ages. Discover the story of the Spitfire at Solent Sky.

EXPLORE THE BEAUTIFUL NATIONAL PARKS

Right on our doorstep you'll find the South Downs National Park, full of fascinating trails to walk or cycle and some great adventure pursuits such as horse riding, hot-air ballooning, golf, hang-gliding and paragliding.

The 140,000 acre New Forest National Park offers a wealth of places to visit and is a haven for cyclists, horse riders and walkers. Discover the beautiful open heaths, ancient oaks and tall pines then meet the famous New Forest ponies as well as deer and cattle in their natural habitat. Visit Peppa Pig World at Paulton's Park or find out more about vintage motors at Beaulieu.

DISCOVER SUSSEX

Just along the coast is the beautiful county of West Sussex. It is rich in history, from impressive castles, historic houses, racing and museums to suit all interests to the city of Chichester with its Roman roots and palace at Fishbourne.

TAKE YOUR PLACE AT THE ROUND TABLE

In Winchester, visit King Arthur's legendary round table and the ancient Winchester Cathedral, the burial place of Jane Austen. Meander down historic streets of the former ancient capital of England. This beautiful city is well worth a visit. Nearby Marwell Wildlife Park is inhabited by more than 250 exotic and endangered species.

CAPITAL ATTRACTIONS

Don't forget London is just 90 minutes away by train or coach. Catch a West End show, shop till you drop in Oxford Street or visit one of the many amazing tourist attractions, it couldn't be easier to take a day trip to the capital.



WINCHESTER CATHEDRAL



LONDON



GREAT PLACES TO STAY



HOTELS
Pages 41 – 43



GUEST HOUSES
Pages 44 – 46



SELF CATERING
Page 46

Portsmouth has a wealth of accommodation – you will find everything from top quality luxury hotels to boutique chic, plus a superb choice of guest houses and bed and breakfasts. The following advertisements showcase a selection of what is on offer. For more details and further information go to www.visitportsmouth.co.uk

BOOKING CONDITIONS

The information contained in this guide is correct at time of going to press. Please note that proprietors reserve the right to amend prices and conditions from those in this guide and/or impose additional

conditions, provided they inform you of such conditions before they accept your booking.

If you need to cancel your booking you must let the hotel/guest house know. A booking forms an immediate contract and full payment may still be payable for cancellations.

HOLIDAY INSURANCE

Don't forget to make sure you have insurance to cover any losses you may incur. Even if you are travelling within the UK, insurance costs very little and could save you a great deal.

KEY TO SYMBOLS

- Facilities for hearing impaired
- Facilities for visually impaired
- Licensed for alcohol
- Restaurant or café
- Breakfast
- Tea/coffee making facilities
- WiFi
- Off street parking
- Ground floor bedrooms
- Children welcome – minimum age
- TV in rooms
- Ensuite rooms available
- Lounge for residents
- Air conditioning
- Hairdryer
- Electric shaver point
- Linen supplied free of charge
- Linen for hire
- Iron available
- Cots available
- Dogs welcome
- Conference facilities
- Lift
- Credit cards accepted
- Staff speak foreign languages
- Cooker
- Refrigerator provided
- Laundry
- Dishwasher
- Microwave



Southampton Road, Portsmouth, Hampshire PO6 4SH
T: 023 9238 3151 **E:** portsmouth.events@marriotthotels.co.uk
W: www.marriott.com

Discover the striking beauty of England's South Coast with a visit to Portsmouth Marriott Hotel.

Conveniently located near both the train and the motorway, and just a short distance from popular landmarks such as Spinnaker Tower, we offer an excellent backdrop for business trips and family holidays.

Sophisticated rooms and suites, high-speed Wi-Fi and blackout curtains, as well as coffee makers and flat-screen TVs.

Enjoy a meal at Cast Iron Bar & Grill, our hotel restaurant, or order 24-hour room service.

Additional 4-star perks include a tranquil on-site spa and a leisure club with a gym and a heated indoor pool.

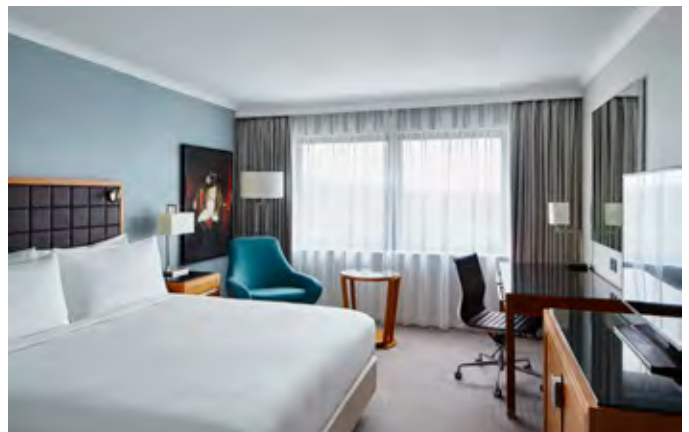
Plan an event in one of our easily configurable function rooms, some of which feature warm natural light, or consider hosting an outdoor event in our garden in the warmer months.

We hope you'll take time to explore attractions including Portsmouth's Historic Naval Dockyard and Gunwharf Quays, too. Plan your UK getaway with us today at the 4-star Portsmouth Marriott Hotel.

Price: From £89 per room per night

Rooms: 174 **En suite:** All

Facilities:



QUEENS HOTEL

Map page 24
Ref C6

Clarence Parade, Southsea, Portsmouth, Hampshire, PO5 3LJ
T: 023 9282 2466 **E:** reservations@queenshotelpo5.com
W: www.queenshotelpo5.com

With uninterrupted views across the seafront and the Solent, the Queens Hotel is one of Portsmouth's most recognisable hotels. The landmark Edwardian building has stood in Southsea for over 114 years. Just minutes away from Southsea Shopping area and a short seaside walk from Old Portsmouth, Gunwharf Quays and the Historic Dockyard you'll be sure to have plenty to do. Our Bar and Restaurant serve food all day, from full English to three course dinners. Why not join us for our famous Sunday Carvery or a luxurious Afternoon Tea?

- 70 unique individually designed bedrooms.
- Spectacular panoramic sea views.
- Perfect wedding/function venue.
- Large enclosed garden.

Price: From £50–£250 per room per night

Rooms: 70 **En suite:** All

Facilities:



ROYAL BEACH HOTEL

Map page 24
Ref E7

St Helen's Parade, Southsea, Portsmouth, PO4 ORN
T: 023 9273 1281 **E:** enquiries@royalbeachhotel.co.uk
W: www.royalbeachhotel.co.uk

Picture yourself in a wonderful Victorian hotel enjoying panoramic views over the Solent. Standing proudly on the seafront at Southsea since 1866, it evokes an authentic feeling of bygone days. Magnificent chandeliers, grand staircases, seafaring memorabilia, enchanting restaurants, and a relaxing sea view lounge to wind away the hours.

- 120 recently refurbished bedrooms including 48 sea view rooms
- Free Wi-Fi in all rooms
- Three suites licensed for Wedding Civil Ceremonies
- Wedding Packages starting from £4,195
- 4 excellent conference suites accommodating 10–250 delegates
- 5 function suites [max 300]
- A la carte restaurant and bar menu available

Price: From £85–£195 per room per night

Rooms: 120 **En suite:** All

Facilities:



ROYAL MARITIME CLUB

Map page 24
Ref B3

75–80 Queen Street, Portsmouth, Hampshire, PO1 3HS
T: 023 9282 4231 **E:** info@royalmaritimeclub.co.uk
W: www.royalmaritimeclub.co.uk

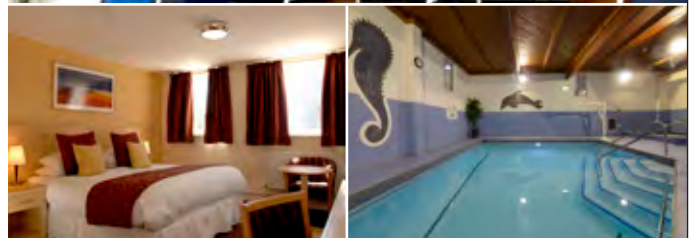
The Club is the perfect venue for overnight stays, holiday breaks, social occasions and business meetings. The hotel is just 300m from Portsmouth Historic Dockyard and a little further to Gunwharf Quays. Set in the heart of British Naval tradition and synonymous with naval excellence, the Club offers members and guests;

- Over 100 comfortable bedrooms to suit all needs
- Swimming pool with hydrojets (now fully accessible)
- Infrared sauna, spa pool
- Horatio's Restaurant serving traditional English breakfast and evening meals
- Compass Café and Victory Bar serving refreshments
- Snooker and Skittle Alleys

Price: £96–£112 per room per night

Rooms: 100 **En suite:** All

Facilities:





Lakeshore Drive, Portsmouth, PO6 3FR
T: 023 9200 6245 **E:** portsmouthhub@village-hotels.com
W: www.village-hotels.com

A warm welcome to you from the new Village Hotel Club Portsmouth. Following a £21 million investment, guests can enjoy 153 stylish rooms, smart technology, comfy beds and a state-of-the-art gym facility.

You can choose a high-spec standard room, or opt to upgrade to a Club room, which includes free access to Village Gym and the exclusive Village Business Club. With our most high-tech offering yet, Club bedrooms are fitted with a virtual concierge, the Amazon Echo Dot. Every aspect of the guest experience for you, from entertainment to air conditioning, is integrated.

You can choose to check in via the Village Hotel app or online for your convenience, or else be greeted by friendly hosts.

Village Gym provides gym goers with the latest equipment from Technogym, a world leader in providing truly innovative cardio and strength gym kit. With more than 100 classes per week, Village Gym also offers an unbeatable range of group fitness classes, such as BodyPump, BodyCombat, BodyAttack Mind and Bodym, Village's HIIT class 'Burn', the ultimate calorie-burning session, and classes by Les Mills®. In addition, the gym is home to a 20-metre swimming pool and luxury steam room and sauna.

The hotel sits on the edge of the largest business park in Portsmouth—Lakeside North Harbour is home to 100-plus companies with a combined workforce of 4,000 people. The Village Hotels Business Club offers a versatile meeting space, with free superfast wi-fi and parking.

You can order tasty food and drinks from the all-day restaurant, Starbucks and from Village Pub, as well as book on-site meetings, events and seminars, all via the Village Hotel app. With its simple click-and-book system, Village Business Club takes the stress out of meetings and events.

If you require additional support, there are dedicated event hosts available all day.

Price: From £45—£130 per room per night

Rooms: 153 **En suite:** All

Facilities:





Member of Portsmouth And Southsea Hoteliers Association. The Portsmouth & Southsea Hoteliers Association (PASHA) is an association of hotels and guest houses of all sizes. Members offer a high standard of value for money accommodation whilst providing a warm welcome and a friendly personal service. PASHA members take pride in their efforts to promote tourism in Portsmouth and Southsea.

EVERLEY GUEST HOUSE

Map page 25
Ref F6

33 Festing Road, Southsea, Portsmouth, PO4 0NG
T: 023 9273 1001 E: everleyguesthouse@ntlworld.com
W: www.everyleyguesthouse.co.uk

Price: From £35–£80 per room per night

Rooms: 9 En suite: All

Facilities:



Claire and Steve warmly welcome you to The Everley Guest House.

All of our bright, comfortable rooms are en-suite with WiFi, Freeview T.V. and tea and coffee making facilities.

Freshly cooked English breakfasts with vegetarian/vegan options are served with homemade white and sourdough granary toasted bread.

Close to restaurants, shops, beach and bus stops.

NORFOLK HOUSE

Map page 24
Ref E7

25 Granada Road, Southsea, Portsmouth, PO4 0RD
T: 023 9282 4162 E: jbpnorfolk@ntlworld.com
W: www.thenorfolksouthsea.co.uk

Price: From £35–£85 per room per night

Rooms: 6 En suite: All

Facilities:



Norfolk House is close to the seafront, shops, eateries and attractions.

Clean, comfortable rooms all with en-suite toilet and shower. Highest hygiene rating award.

Complimentary Wi-Fi. Free car parking space per room on the forecourt.

Separate tables in spacious breakfast room. Guest lounge with fridge and microwave.

REES HALL

Map page 24
Ref C5

Southsea Terrace, Southsea, Portsmouth, PO5 3AP
T: 023 9284 4884 E: reservations@port.ac.uk
W: www.eventportsmouth.co.uk

Rees Hall is a modern building located on Southsea seafront with views across Southsea Common and the Solent. It is also a short distance from Gunwharf Quays and the Historic Dockyard.

The award-winning Rees Hall provides the ideal venue for a leisure break or business trip, with a wide range of quality comfortable en-suite rooms, two guest lounges, bar and quiet courtyard garden.

- Full English breakfast and free WiFi included.
- Coach parties welcome.
- Conference facilities available.
- Rooms available from June to September.

Price: From £52–£68 per room per night

Rooms: 225 En suite: All

Facilities:



ST MARGARET'S LODGE

Map page 24
Ref E7

3 Craneswater Gate, Southsea, PO4 0NZ
T: 023 9282 0097 E: enquiries@stmargarets-southsea.co.uk
W: www.stmargarets-southsea.co.uk

Detached Edwardian property close to boating lake, Seafront. Well maintained comfortable rooms, spacious breakfast room overlooking pretty garden, tea/coffee making facilities, parking on forecourt. For best prices, come direct to our website.

Price: £65–£95 per room per night, or £35–£47.50 per person per night

Rooms: 7 En suite: All

Facilities:



THE ALBATROSS GUEST HOUSE

Map page 24
Ref E6

51 Waverley Road, Southsea, Portsmouth, PO5 2PJ
T: 023 9282 8325 **E:** albatross_guesthouse@yahoo.com
W: www.albatrossguesthouse.net

You are guaranteed a friendly welcome and complete privacy in a house that dates back to the 1860s. This comfortable guest house is conveniently centrally located in Southsea and has been welcoming visitors for more than 50 years.

Price: From £35–£55 per person per night

Rooms: 7 **En suite:** 3

Facilities:



THE FERRYMAN GUEST HOUSE

Map page 24
Ref D6

16 Victoria Road South, Southsea, Portsmouth, PO5 2BZ
T: 023 9287 5824 **E:** theferrymanhotel@hotmail.com
W: www.ferryman-southsea.co.uk

A distinctive building in the Art Deco style with spacious and stylish guestrooms. We are adjacent to the Kings Theatre and all the bars, restaurants, shops and cafes in central Southsea.

Close to the beach and well linked to all the attractions.

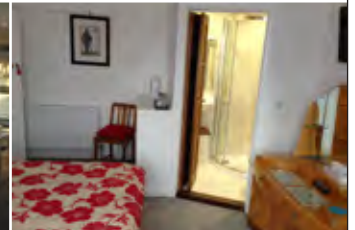
Price includes full English and continental breakfast served in the penthouse dining room with skyline city views.

Flat screen TVs with freeview and free WiFi.

Price: From £40–£55 per person per night

Rooms: 12 **En suite:** 9

Facilities:



THE PIER

Map page 24
Ref C5

2 Bellevue Terrace, Southsea, Portsmouth, PO5 3AT
T: 023 9282 3813 **E:** gill@pier-hotel.com
W: www.pier-hotel.com

10 minutes walk from Historic Dockyard & Gunwharf Quays. Trip Advisor 'Certificate of Excellence' 4 years running. 5 elegant bedrooms (pod style en-suite inc. toilet & shower) Quality sprung beds with fine Egyptian cotton linen. Toiletries. Flatscreen Freeview TV. Free Wi-Fi. Free parking.

Price: From £70–£85 per room per night

Rooms: 5 **En suite:** All

Facilities:



Follow us on Twitter
for the latest news and
events @visitportsmouth



Follow Portsmouth
on Facebook.com/
portsmouththewaterfrontcity



Experience Portsmouth
on YouTube—search for
'Visit Portsmouth'

Important note: Whilst every effort has been made to ensure that the information in this publication is correct, Portsmouth City Council cannot guarantee complete accuracy of the information and all liability for loss, disappointment, negligence or other damages caused by this publication, is hereby excluded. As changes often occur after press date, it is advisable to confirm the information given with the relevant organisation. All information is for guidance only, and was current as of December 2017.

The cover: View of Portsmouth—illustrated by local artist Dave Thompson
www.davethompsonillustration.com

Influenced by the classic era of 1950s poster design and the artists famous for creating the travel posters for the London Underground, Dave knows how to capture a mood with his images that depict key sites in the island city he calls home.

The cover image is available for sale on a range of gifts. Visit one of our Waterfront Gifts shops or contact tourism@portsmouthcc.gov.uk for more information including mail order details.



UPPER MOUNT HOUSE

Map page 24
Ref D6

The Vale, Southsea, Portsmouth, PO5 2EQ

T: 023 9282 0456 **E:** uppermountportsmouth@btconnect.com

W: www.uppermountportsmouth.co.uk

The Upper Mount House was built in 1851 and is known locally as a 'Thomas Owen House'. It is a Grade II listed building standing in its own grounds. Upper Mount House is quietly tucked away in a rural-like backwater of Southsea, but only half a minute from the shops and restaurants. Buses to all parts of the city stop around the corner.

Our own large car park within the grounds allows you to leave the car and enjoy the amenities of Portsmouth and Southsea without parking worries. We also boast 70% of our customers annually are returning guests.

The Upper Mount House is graded four-star guest accommodation and we have 15 bedrooms, six of which are on the ground floor. All rooms are ensuite, many rooms have bathtubs and showers.

Totally non-smoking.

Luxury hotel quality white bed linen used as standard throughout, with our in-house five-star laundry delivering quality and freshness.

Full breakfast menu offered with fresh fruits and breads, and traditional full-English breakfast, special diets catered for at no extra cost.

- Luxury rooms available for that special occasion.
- Free WiFi.
- Certificate of Excellence Winner on TripAdvisor.
- Free car parking space for each room.
- Flexible check-in times.

Price: £75–£110 per room per night,
or £50–£65 per person per night

Rooms: 15 **En suite:** All

Facilities:



LAKESIDE APARTMENTS

Map page 25
Ref F6

5 Helena Road, Southsea, Portsmouth, PO4 9RH

T: 07810 436981 / 023 9282 0690 **E:** lakesidesouthsea@aol.com

W: www.lakesidesouthsea.com

Price: From £250–£360 per unit per week

Units: 6 **Sleeping capacity:** 2/+child

Facilities:



Quiet, fully furnished self-catering apartments, great location for visiting all the fantastic sites of Portsmouth. Five-minute walk from the Seafront, Canoe Lake, Museums—Ideal base for all things nautical.

Open all year round, Pets welcomed, all major credit cards accepted.

Weekly bookings Friday–Friday.

Non-smoking establishment.



VISITOR INFORMATION

Portsmouth's award-winning visitor information service is here to offer you a warm welcome and help you make the most of your time in this vibrant city. Staff can help with:

- information on local, regional and national attractions and events
- tickets for Portsmouth attractions—with up to 10% discount
- theatre, ferry and coach trip tickets
- accommodation (bookable for small fee)
- local gifts, books and souvenirs

INFORMATION FOR GROUPS

If you're organising a visit for 10 or more people to Portsmouth, make sure you check out the great group rates and offers available to you.

We can offer advice on group deals at hotels and attractions, coach parking, or tours and experiences that will make your visit that little bit different.

Book a Greeter for groups of six or less or a Tourist Guide* for larger groups (*fee charged).

For more information, contact the visitor information service. Call **023 9282 6722**, go to **www.visitportsmouth.co.uk**, or email **vis@portsmouthcc.gov.uk**



YOUR LINK TO

an Island escape

Our FastCat passenger service connects Portsmouth with Ryde on the Isle of Wight in just 22 minutes – the perfect place to start your Island adventure on foot, by bike or by train.

Book your trip now at wightlink.co.uk



YOUR LINK TO THE ISLAND



THE D-DAY STORY
PORTSMOUTH

**We
wanted
to see
the
sights.**

Opening Spring 2018
thedaystory.com

**In the
end we
couldn't
forget
them.**